

Alaska Department of Fish and Game

Habitat Section
Southeast Region



114-34-10100 Tributary 8

ADDITION

Water body name:

Survey date: 7/6/2022; 9/16/2022

Quad: Juneau A-5

Species & Lifestage:

Upper Reach Latitude: 58.113269 **Longitude:** -135.597876

Survey crew: FC, RR, DK

Lower Reach Latitude: 58.111196 **Longitude:** -135.601438

Findings: We surveyed this uncataloged stream using a backpack electrofisher, baited minnow traps, and GPS. We captured juvenile coho salmon, Dolly Varden, cutthroat trout, rainbow trout, and sculpin. The tributary stream descends a reach of about 12% gradient into a gravel and cobble channel, passing under an old bridge (Table 1; Figures 1–4).

Recommendations: Add this uncataloged stream to the anadromous waters catalog for rearing coho salmon (Figure 5).

Nomination: Pending

Table 1.—114-34-10100 tributary 8 survey data.

Waypoint	Latitude	Longitude	Notes	Stream Width ft	Stream Substrate	Habitat Features	Gradient %	Sample Effort	Sample Results
938	58.112703	-135.598932	Minnow trap soaked overnight downstream of bridge and 2' tall log jam in 2' deep jump pool. River-right abutment fallen from stream eroding fill underneath. 2-yr CO capture.	15-20	Large Gravel Small Gravel		4-6	MT	5 CO 15 CT 8 DV 1 RT 4 SC
1870	58.112968	-135.598715	Returning to survey via electrofishing upstream of bridge. Continued 1-yr CO capture.	10-12	Large Gravel Cobble		4-6	EF	2 CO 2 DV
1871	58.113152	-135.598021	Gradient increasing slightly compared to downstream. Several 1-2' tall log jams. Continued 1-yr CO capture upstream of log jams.	10-12	Large Gravel Cobble	Log Jams	4-6	EF	2 CO 1 DV
1872	58.113504	-135.597810	Increasing gradient compared to downstream. Increasing incidence of small but successive and quick-moving falls. Resident fish capture.	10-12	Cobble Large Gravel		6-8	EF	3 CT 3 DV
1873	58.113545	-135.597689	Gradient increases substantially (12%+) upstream. Becoming much less navigable due to steep incised channels and large amount of tree-fall. Actual barrier not located but likely near extent of anadromy.	10-12	Cobble Large Gravel		6-8	Not Fished	



Figure 1.—Juvenile coho salmon captured at waypoint 1870.



Figure 2.—Channel at waypoint 1871.



Figure 3.—River-right bridge abutment with collapsed log at waypoint 938.



Figure 4.—Channel at waypoint 1873.

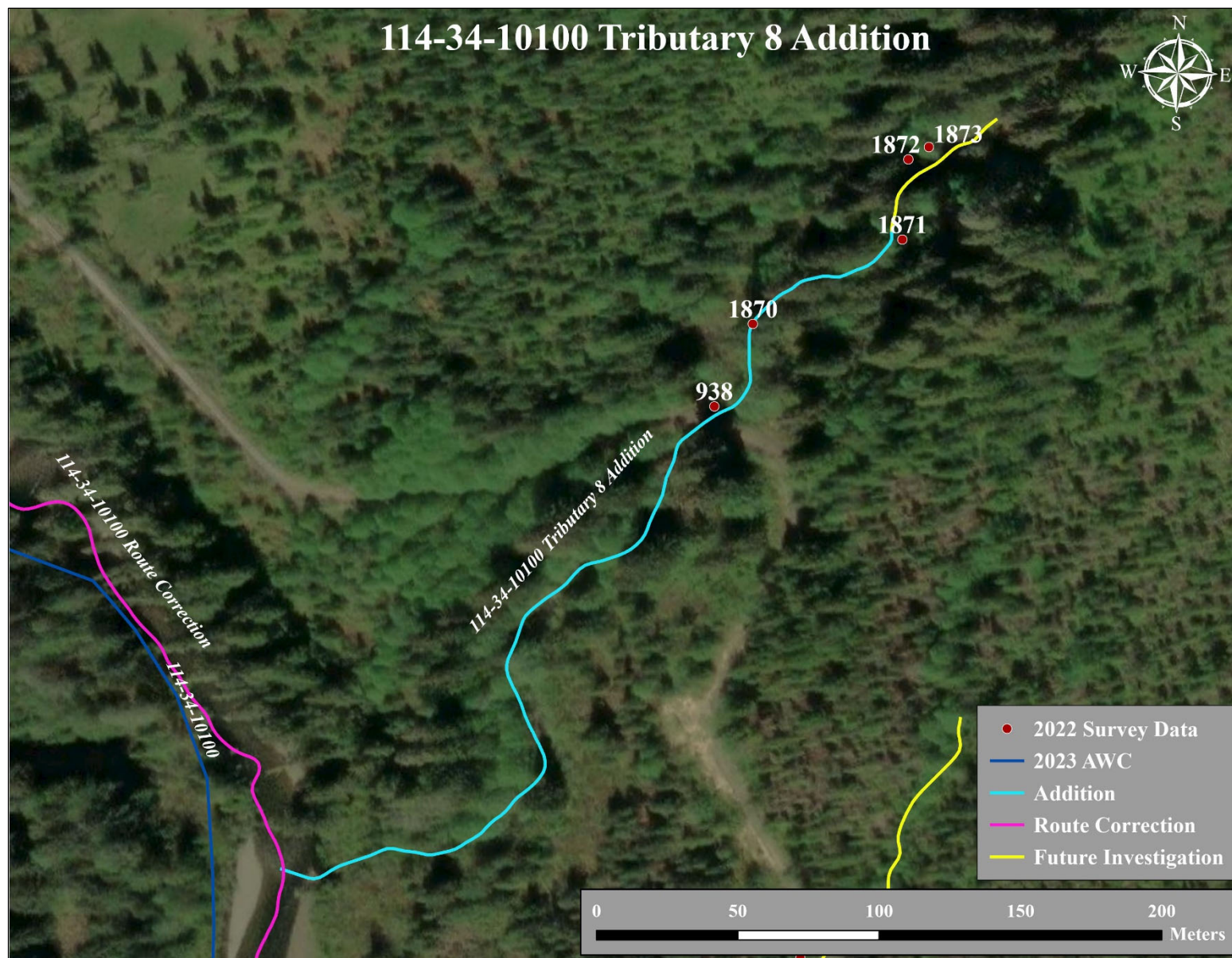


Figure 5.–114-34-10100 tributary 8 addition map.